


Energy Development in Texas

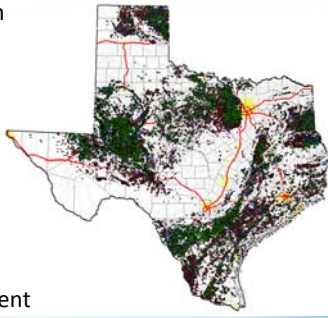
PP-16-02

Maintenance Division
Inter Agency Contract

Summer 2016



- Oil/Gas permits issued/year-10,000 to 24,000
- Well development
 - Site preparation
 - Drilling
 - Completion
 - Operating Infrastructure
- Well operation
 - Crude haul
 - Salt water haul
 - Re-stimulation
 - Service equipment



BACKGROUND



- Well development
 - 1,000 to 4,000 loaded trucks
- Well operation
 - Crude oil haul
 - Salt water haul
 - Re-stimulation (2,000 plus or minus)
 - Service equipment

BACKGROUND

Economic Impact

- West Texas
 - \$14.5 billion in 2012
 - 21,450 jobs
 - \$1 billion in wages
 - \$475 million in state revenue



BACKGROUND


Economic Impact

- South Texas
 - \$46 billion in 2012
 - 89,000 jobs




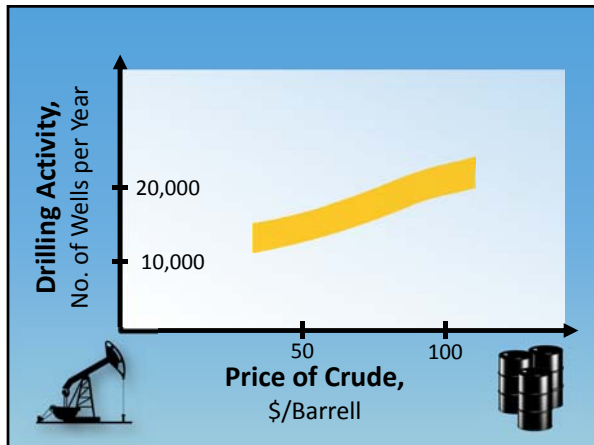
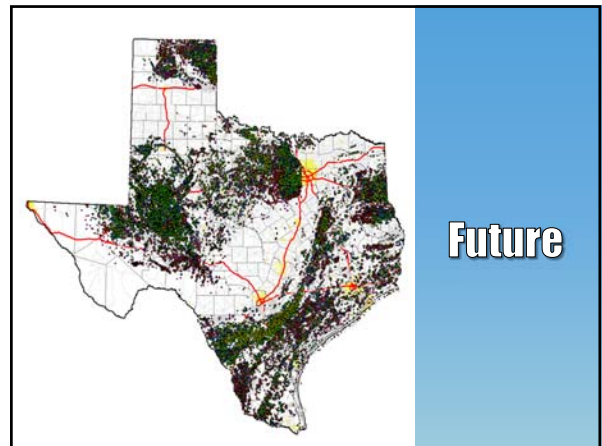
ROADWAY IMPACTS

- Impacts
 - FM roadways
 - SH and US highways
 - IH highways
- Estimated damage per year
 - \$1 billion to TxDOT system
 - \$1 billion to local government system




ROADWAY IMPACTS

- **Maintenance costs**
 - From \$500 to \$1,500 per year
 - To \$35,000 to \$45,000 per year
- **Cost to industry (no repair)**
 - \$1.5 to \$3.5 billion per year
 - Equipment damage
 - Lower operating speeds
- **TxDOT expenditures annually**
 - TxDOT-\$500 million
 - Local gov't-\$200 million

Energy Development in Texas Documents

Document Number	Title
ESB-14-01	TxDOT/TTI Joint Effort to Address Roadway Damage Resulting from Energy Development



Documents available on TxDOT Maintenance Division SharePoint site at [https://txdot.sharepoint.com/sites/division-mnt/site pages/home.aspx](https://txdot.sharepoint.com/sites/division-mnt/site%20pages/home.aspx)